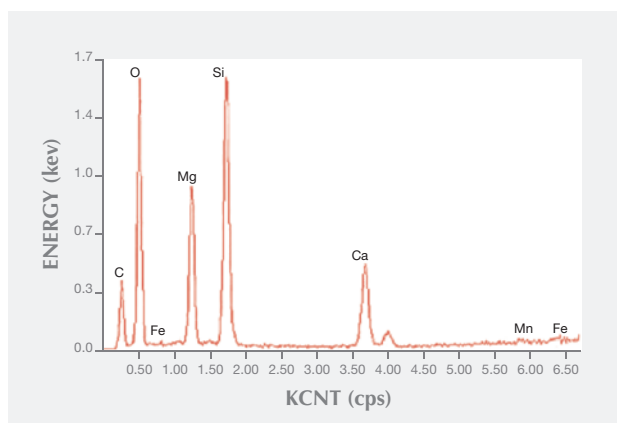


TABLE 1. EDS chemical composition of dendritic patterns in nephrite from Guangxi Province, China.

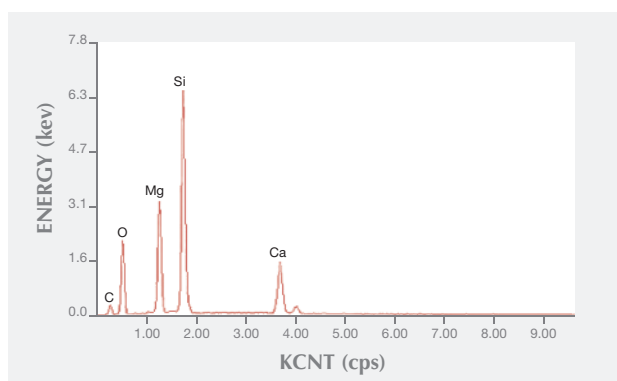
Element	Wt.%	At.%
O	39.16	42.23
Si	14.52	8.92
Mg	9.48	6.73
Ca	7.20	3.10
Fe	1.88	0.58
Mn	1.27	0.40
C	26.49 ^a	38.05 ^a

^aC content is from the carbon-coated surface.

**TABLE 2.** EDS chemical composition of band patterns in nephrite from Guangxi Province, China.

Element	Wt.%	At.%
O	33.29	39.19
Si	25.88	17.36
Mg	13.26	10.27
Ca	9.16	4.31
C	18.41 ^a	28.88 ^a

^aC content is from the carbon-coated surface.

**TABLE 3.** EDS chemical composition of unpatterned areas in nephrite from Guangxi Province, China.

Element	Wt.%	At.%
O	30.27	37.67
Si	29.91	21.20
Mg	14.05	11.51
Ca	11.28	5.61
C	14.49 ^a	24.02 ^a

^aC content is from the carbon-coated surface.

