

**G&G Data Depository:** Additional figures to accompany K. S. Moe, “Gem News International: Trapiche spinel from Mogok, Myanmar,” *Gems & Gemology*, Vol. 47, No. 4, pp. 329–330.

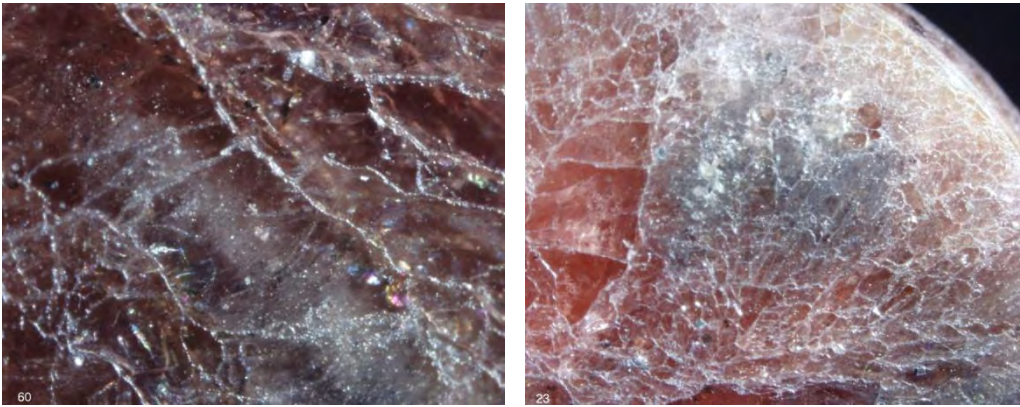


Figure DD-1. Wispy clouds and tiny graphite crystals are mainly confined within arms of the trapiche structure in the spinel (left). A few arms become broader as they approached the rim of the cabochon (right). Photomicrographs by K. S. Moe.

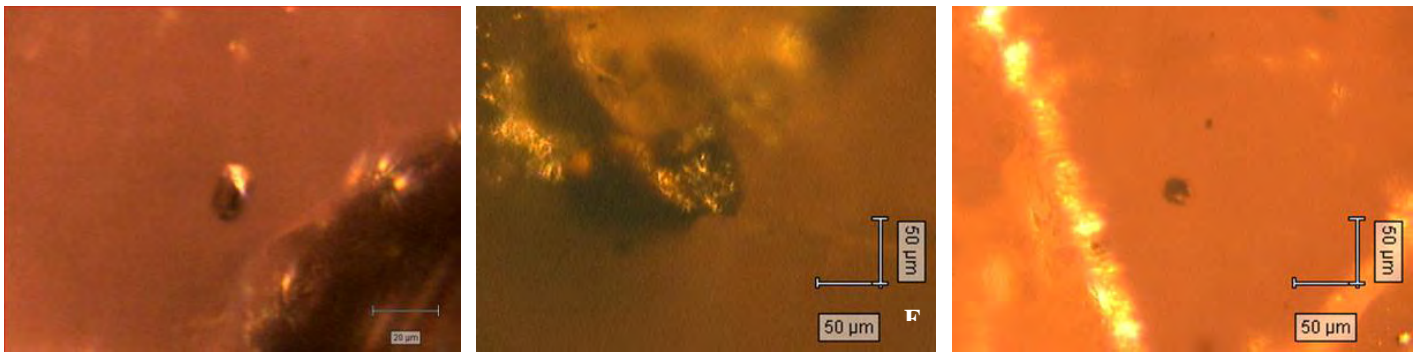


Figure DD-2. Micro-inclusions in the trapiche spinel identified using micro-Raman spectroscopy included molybdenite crystals in an “arm” (left), hematite in a cavity along the rim (center), and a translucent dolomite in the core (right). Raman microscope photomicrographs by K. S. Moe.