

Gems & Gemology Data Depository

Supplementary photos to accompany: Abduriyim A., Kobayashi T. (2008) Gem News International: Gemological properties of andesine collected in Tibet and Inner Mongolia. *Gems & Gemology*, Vol. 44, No. 4, pp. 371–373.

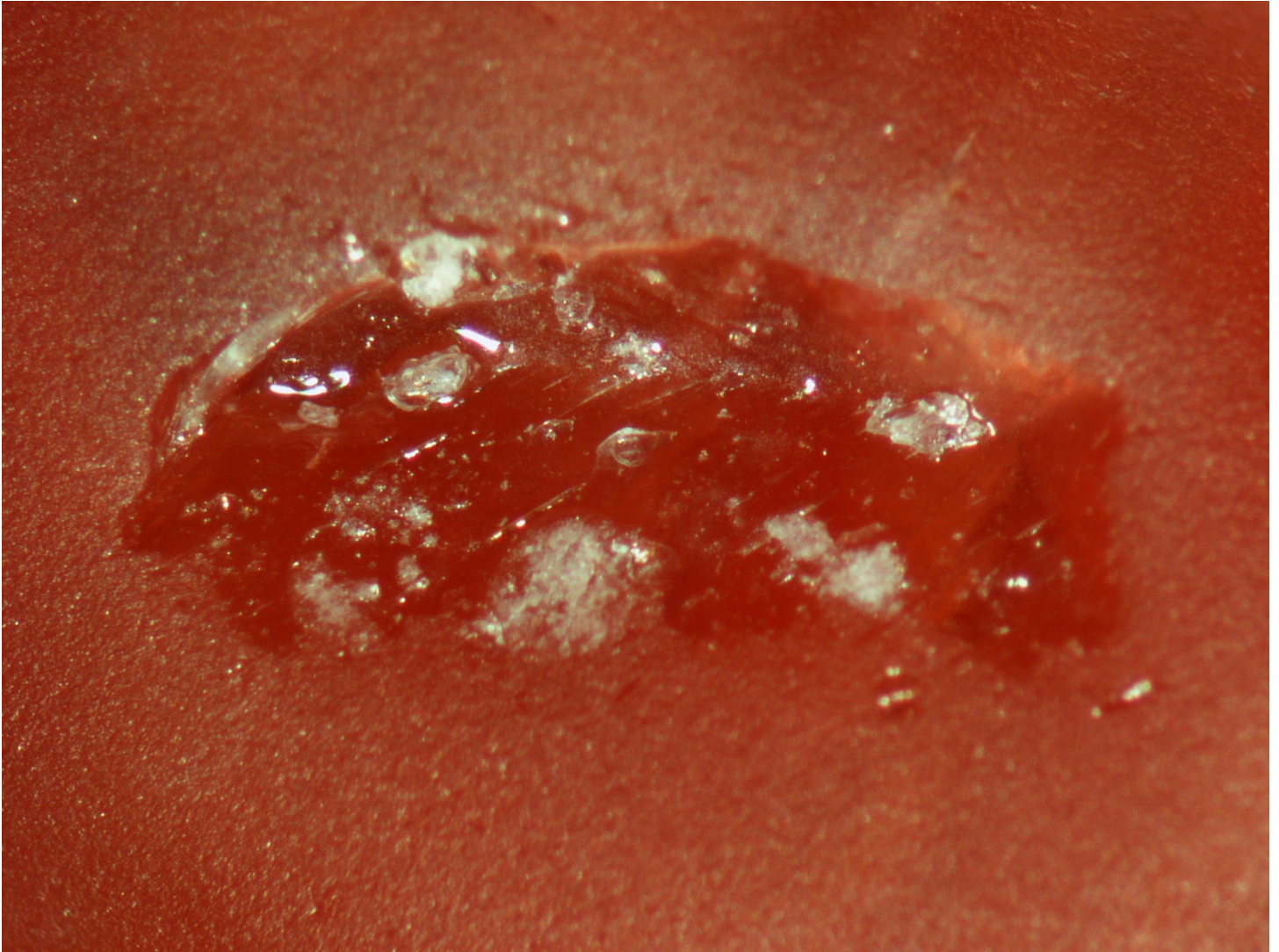


Figure DD-1. Surface etching feature on Tibetan andesine. Photomicrograph by A. Abduriyim, magnified 30x.; © Gemmological Association of All Japan – Zenhokyo.

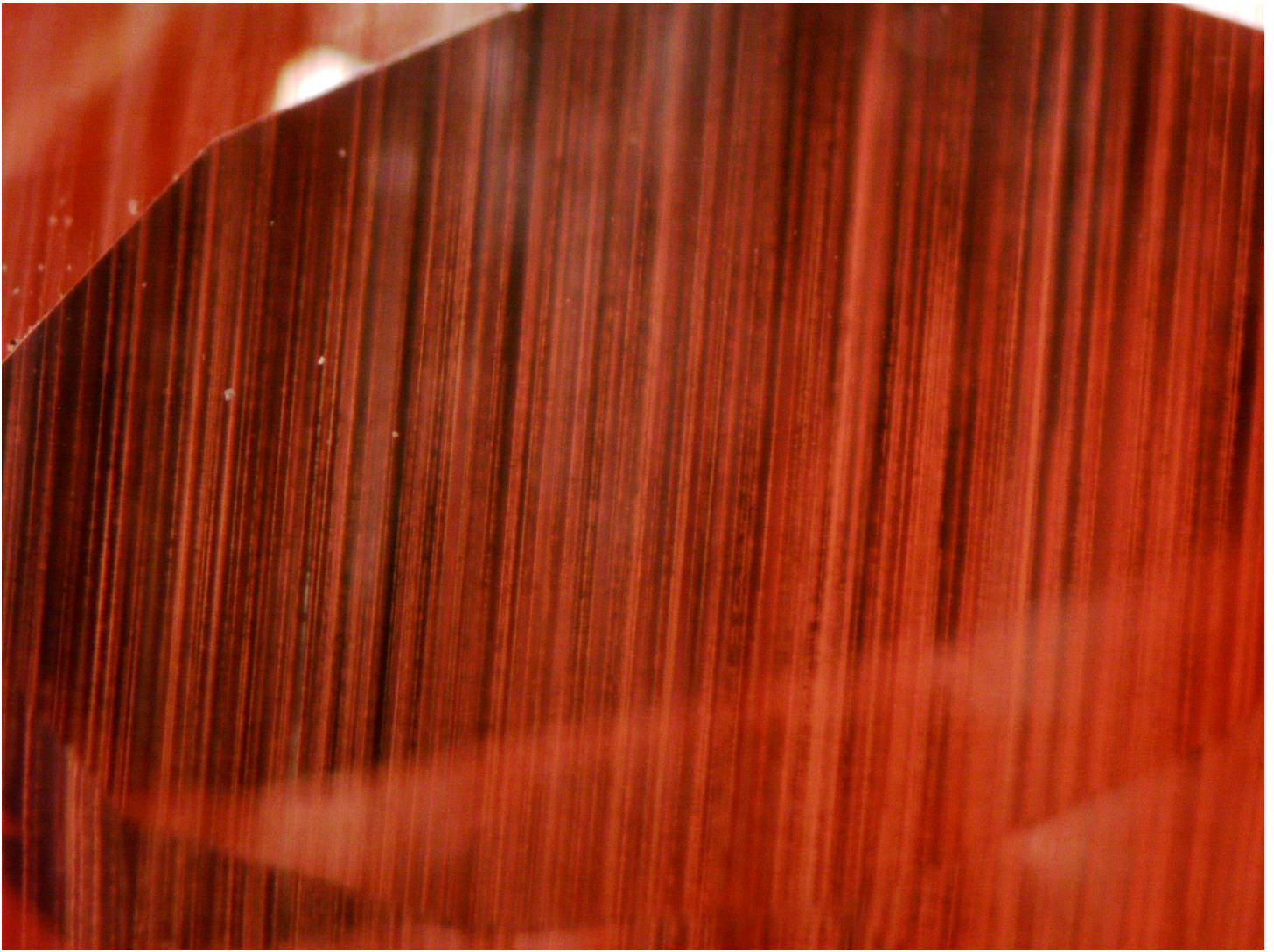


Figure DD-2. Twin lamellae in andesine from Tibet. Photomicrograph by A. Abduriyim, magnified 15x; © Gemmological Association of All Japan – Zenhokyo.

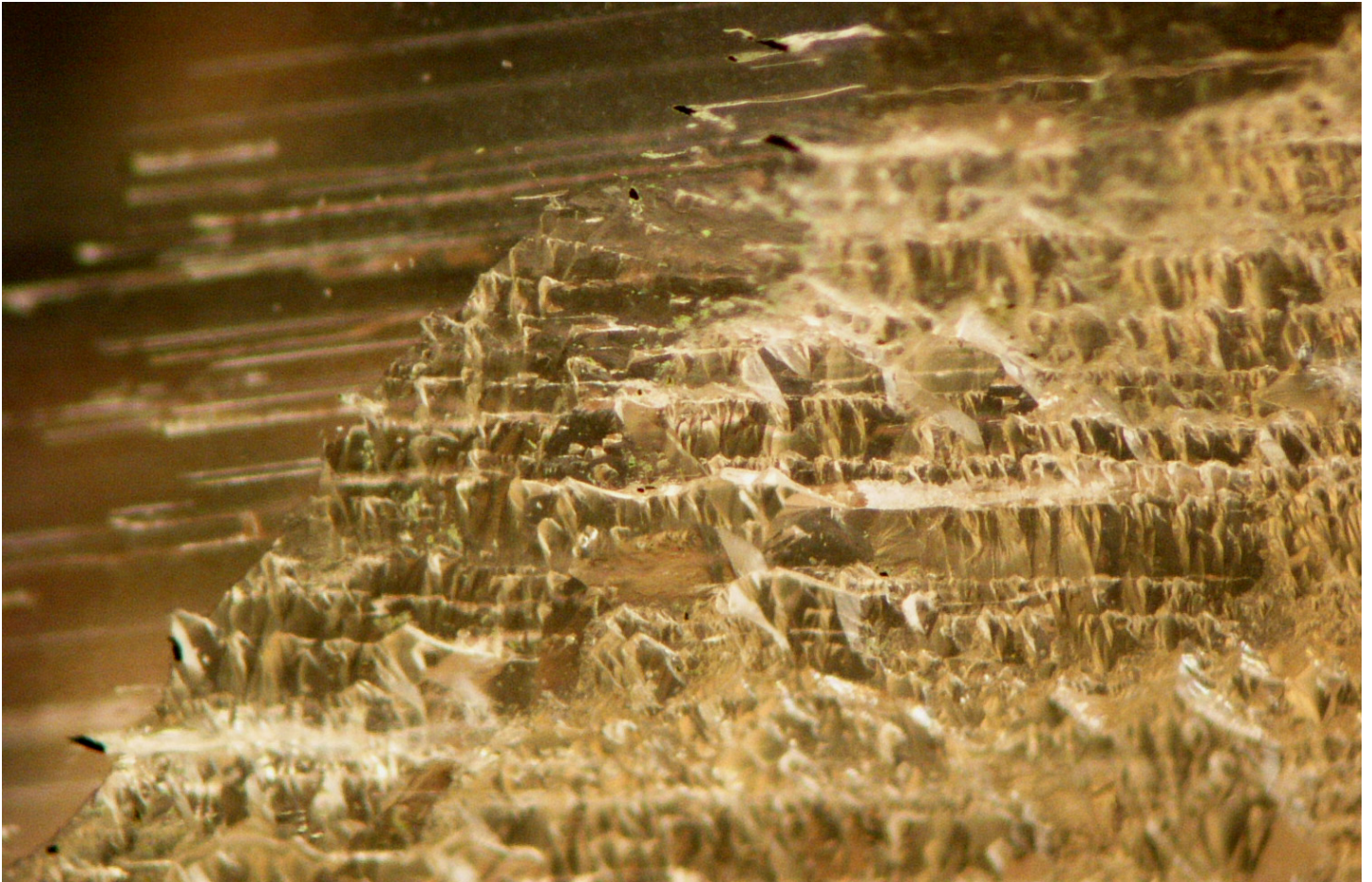


Figure DD-3. Twin lamellae in yellow andesine from Inner Mongolia. Photomicrograph by A. Abduriyim, magnified 15x; © Gemmological Association of All Japan – Zenhokyo.